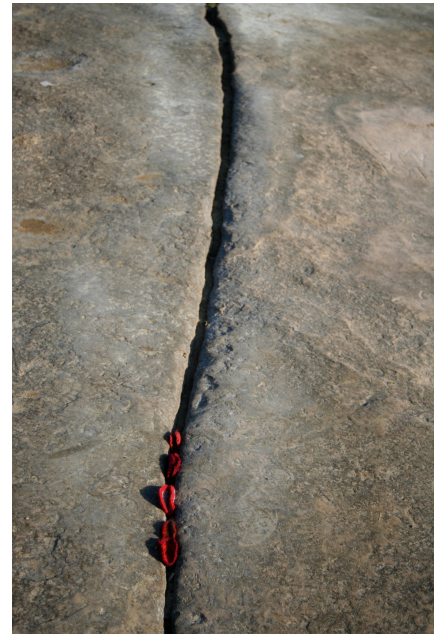


ELSPETH FOUGERE | *HERE, THERE AND EVERYWHERE (WE ARE A COMMUNITY OF CELLS)*

1 -24 December 2009



Elspeth Fougere's *Here, There and Everywhere (We are a Community of Cells)* begins with a mass of woollen crochet spirals, a caricature collection of cells. These handmade forms are taken out into the landscape, placed onto bodies and into environments in playful, spontaneous, storytelling activations. The encounters are photographically documented as drawings of events, forming trace histories of relationships between the body and other forms and act as a basis for ongoing interactions during the exhibition.

Fougere is trying to tap our potential as performing bodies, inviting her participants to explore the inheritance we carry with us wherever we go, in our cells and DNA. This inheritance is information about our past - stories, interactions and residual life skills passed on which can help us exist responsibly and creatively in whatever landscape we are in, along with whatever resources or industries are physically passed on to us. She seeks to affirm that within us we do have sustainable knowledge that we can re-access and make use of. Woolcraft is one stream of knowledge that Fougere herself, as a Pakeha artist, has inherited, one which she seeks to share and reinvigorate.

Every Saturday from 12 - 3 Fougere and collaborators will run free open workshop craft sessions inviting participants to help her grow and exchange the colony of woollen cells, or to use the space as a place to mingle and work together with other local crafters. Through freely sharing wool craft know-how, make-your-own-pieces, and all the stories and laughter that go along with learning to crochet, the cells will spread out from the gallery installation and into Dunedin. Her strategy of gathering people together for the exchange of objects, skills, resources and stories in the gallery space, captures core philosophy of the contemporary craft resurgence.